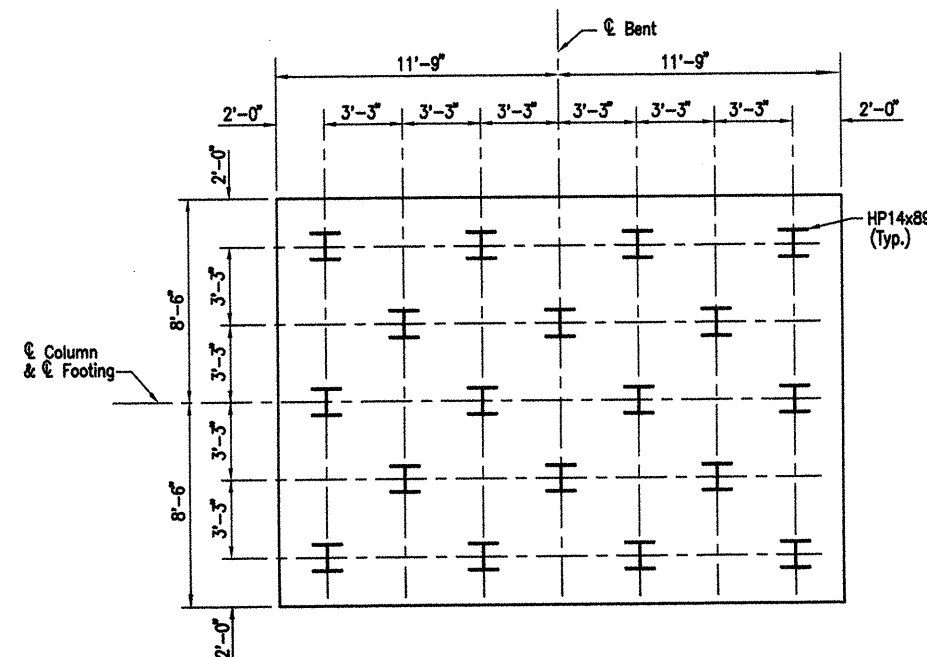


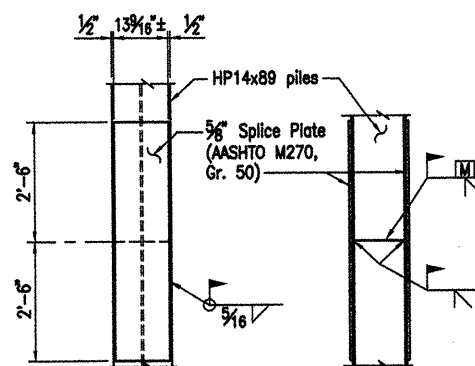
ACAD SCALE: 1/4" = 1'-0"

COMPANY\1999 JOBS\99-044 AH\TD\WHITERIVER\JOB 110394\2d\lbt83alt1

DATE REVISED	DATE FILMED	DATE REVISED	DATE FILMED	FED. ROAD NO.	STATE	FED. AID PROJ. NO.	SHEET NO.	TOTAL SHEETS
					ARK.			
				JOB NO.		110394	55	196
				06830		BENT 83		41967



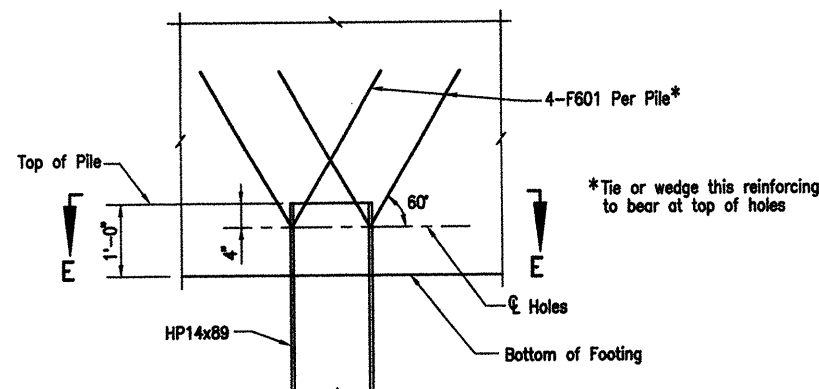
SECTION D-D
Scale: 1/4" = 1'-0"



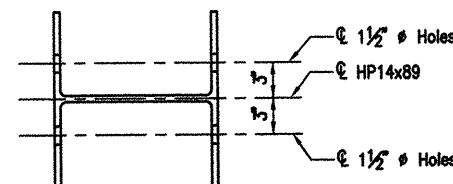
PILE SPICE DETAIL

Scale: 1/2" = 1'-0"

Note: The Contractor may for his convenience and at his expense provide as many as three splices per pile for steel bearing piling. Minimum spacing between splices shall be 5'-0".

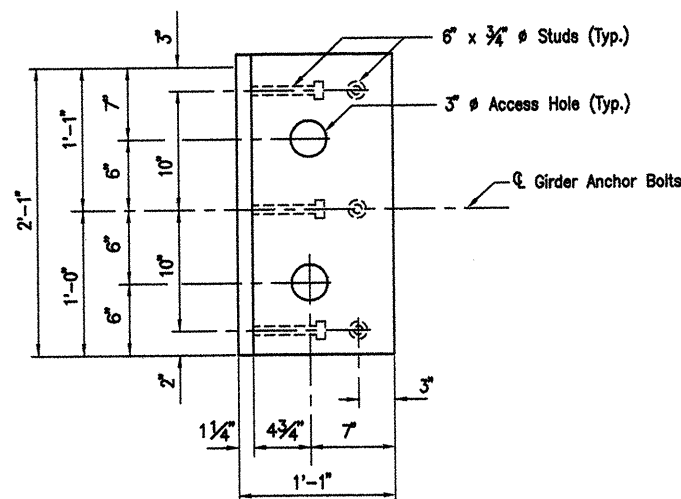


DETAIL AT PILE TOP
Scale: 3/4" = 1'-0"



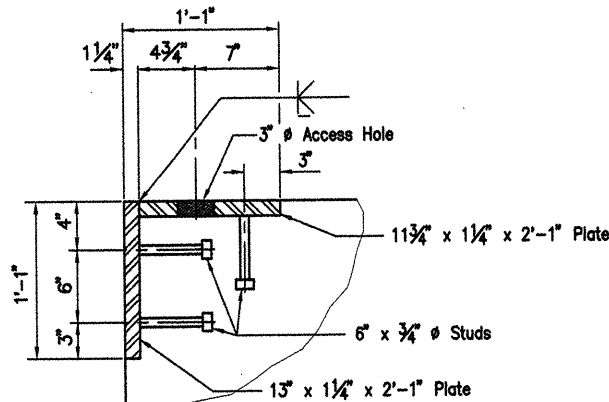
SECTION E-E

Scale: 1 1/2" = 1'-0"

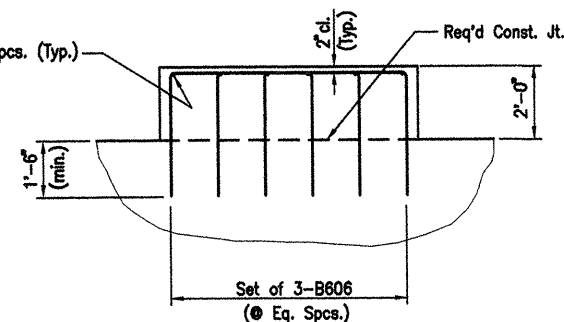


ARMOR PLATE DETAILS

Scale: 1 1/2" = 1'-0"



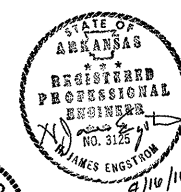
6-B607 @ Eq. Spcs. (Typ.)



SECTION F-F

Scale: 3/8" = 1'-0"

Note:
For Location of Sections D-D and F-F,
See Dwg. No. 41966.



BAR LIST-PER BENT

Mark	No. Req'd	Length	'A'	'B'	P.D.	Bending Diagrams
B501	68	25'-8"	5'-2"	7'-2"	2 1/2"	
B502	16	21'-3 1/2"	7'-2"	7'-2"	2 1/2"	
B503	83	15'-2"	3'-0"	6'-2"	2 1/2"	
B504	24	8'-5 1/2"	7'-2"	0'-9"	2 1/2"	
B601	30	6'-5"	2'-9"	2'-0"	4 1/2"	
B602	24	7'-8"	4'-0"	2'-0"	4 1/2"	
B603	20	7'-2"	3'-6"	2'-0"	4 1/2"	
B604	24	7'-6"	3'-10"	2'-0"	4 1/2"	
B605	47	41'-2"			Str.	
B606	45	10'-9"	3'-9"	3'-6"	4 1/2"	
B607	18	6'-10"			Str.	
B1101	24	41'-2"			Str.	
B1102	24	44'-2"	41'-2"	1'-0 1/2"	11 1/4"	
C801	2	3834'-2"				
C1001	90	56'-3"	54'-9"	1'-9 1/2"	9"	
F601	144	5'-0"	SEE DIAGRAM		4 1/2"	
F1001	68	25'-10"	23'-0"	11 1/2"	11 1/2"	
F1002	94	19'-4"	16'-6"	11 1/2"	11 1/2"	
F1003	34	23'-0"			Str.	
F1004	48	16'-6"			Str.	

NOTES:

- All concrete shall be Class "S". All exposed corners to be chamfered 3/4" unless otherwise noted. All concrete shall be poured in the dry.
- All reinforcing steel shall conform to AASHTO M31 or M53, Gr.60.
- If anchor bolts are drilled into cap, top reinforcing bars shall be properly placed to avoid damage.
- For additional information, see Layout.
- Contractor has the option of placing a 7'-8" lap splice in the vertical leg of C1001 bars. The splice shall be in the middle half of the column height. This shall be included in "Reinforcing Steel Bridge".
- Piles shall be HP 14x89 (AASHTO M270, Grade 50).

NOTES FOR SPIRAL REINFORCING

- Ends of spirals in footing and cap shall have 1 1/2 turns and terminate with a 135° hook and a 24" tail as shown in Bar List.
- Spiral reinforcement at splices of bars in the length designated as permissible for lap splices shall be terminated by a 135° hook with a 10" tail hooked around a vertical bar.
- Spiral reinforcement shall be plain round or deformed steel bars meeting the requirements of AASHTO M31 or M53 (Grade 60) or shall be cold drawn wire meeting the requirements of AASHTO M32 or M225 (Grade 70) with a minimum diameter of 0.75".
- Spiral reinforcement shall be paid for at the contract unit price bid per pound for "Reinforcing Steel - Bridge (Grade 60)". No additional payment shall be made for spacers, splices or bracing needed for assembly, shipping, handling or erecting.
- Lapped splices in spirals shall be lapped 80 bar diameters minimum.
- Adjust spiral pitch as needed to accommodate footing or cap bars.

ALTERNATE NO. 1

DETAILS OF BENTS - WHITE RIVER
BENTS 83
(SHEET 2 OF 2)

WHITE RIVER STR. & APPRS.
(CLARENDON) (PH II) (F)
MONROE COUNTY

ROUTE 79 SEC. 13

ARKANSAS STATE HIGHWAY COMMISSION
LITTLE ROCK, ARK.

Engstrom/Modjeski and Masters, Inc.

DRAWN BY: CJA DATE: Nov. 07 FILENAME: b1103941_b04
CHECKED BY: FS DATE: Nov. 01 SCALE: 1/4" = 1'-0"
DESIGNED BY: BMH DATE: Nov. 01
BRIDGE NO. 06830 DRAWING NO. 41967

12" 0 2' 4' 6' 8'
SCALE IN FEET